



GMT MONTHLY MEMBERSHIP PROGRESS REPORT

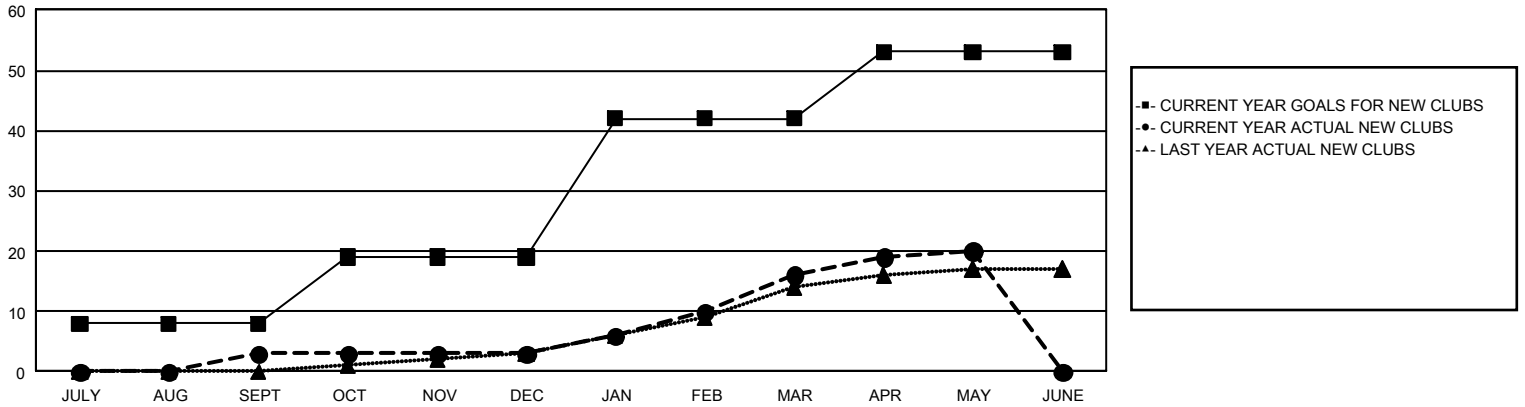
GAT Constitutional Area 5 - Japan

Results as of: 5/31/2024

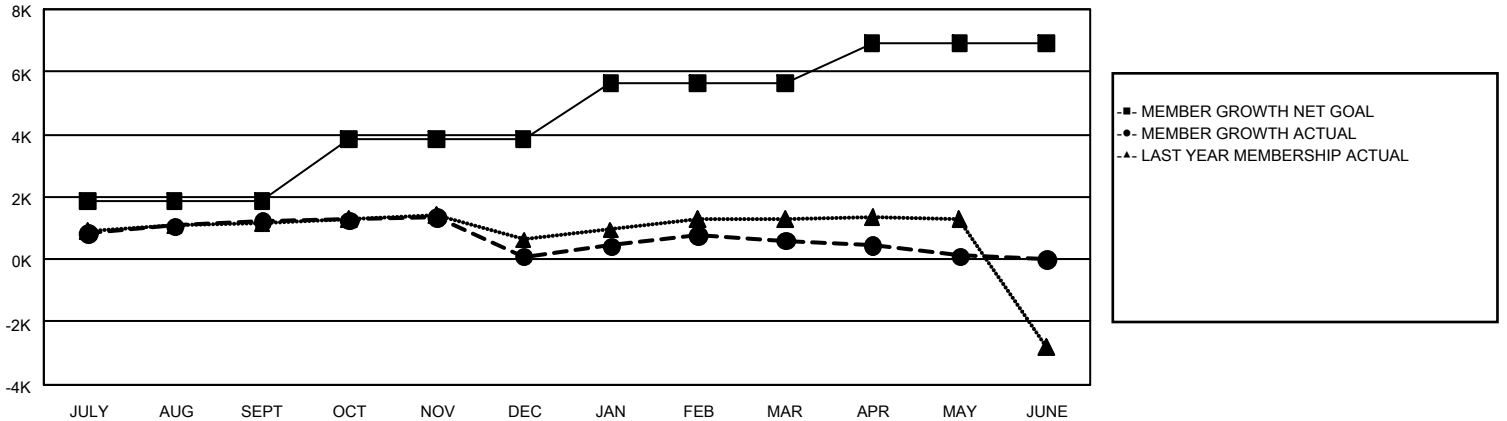
REPORT DOES NOT INCLUDE CLUBS IN UNDISTRICTED AREAS.

Clubs				Members			
RESULTS FOR 2023-2024				RESULTS FOR 2023-2024			
QUARTER	NEW CLUB GOAL	NEW CLUBS	DROPPED CLUBS	QUARTER	MEMBER GROWTH NET GOAL	MEMBER GROWTH ACTUAL	DROPPED MEMBERS ACTUAL (including transfers)
JULY/AUG/SEPT	8	3	3	JULY/AUG/SEPT	1,850	2,926	1,552
OCT/NOV/DEC	11	0	9	OCT/NOV/DEC	1,994	1,269	2,333
JAN/FEB/MAR	23	13	2	JAN/FEB/MAR	1,787	2,211	1,609
APR/MAY/JUNE	11	4	7	APR/MAY/JUNE	1,271	1,143	1,584

GOALS AND ACTUAL NEW CLUBS CUMULATIVE



GOALS AND ACTUAL MEMBERS CUMULATIVE



DROPPED CLUBS: 21	1,975 CLUBS OF 2,778 ADDED 1 OR MORE NEW MEMBERS	<u>GENDER DISTRIBUTION</u> MALE 74,418 (76.98%) FEMALE 22,244 (23.01%)
<u>DROPPED MEMBERS</u> DECEASED 742 CLUB CANCELLED 4 OTHER 6,296 <hr/> TOTAL 7,042	CLICK HERE FOR CUMULATIVE MEMBERSHIP DATA	TOTAL FAMILY UNIT MEMBERS 29,418 FAMILY MEMBERS PAYING HALF DUES 16,494